

Madison, Wisconsin

CITY OF MADISON

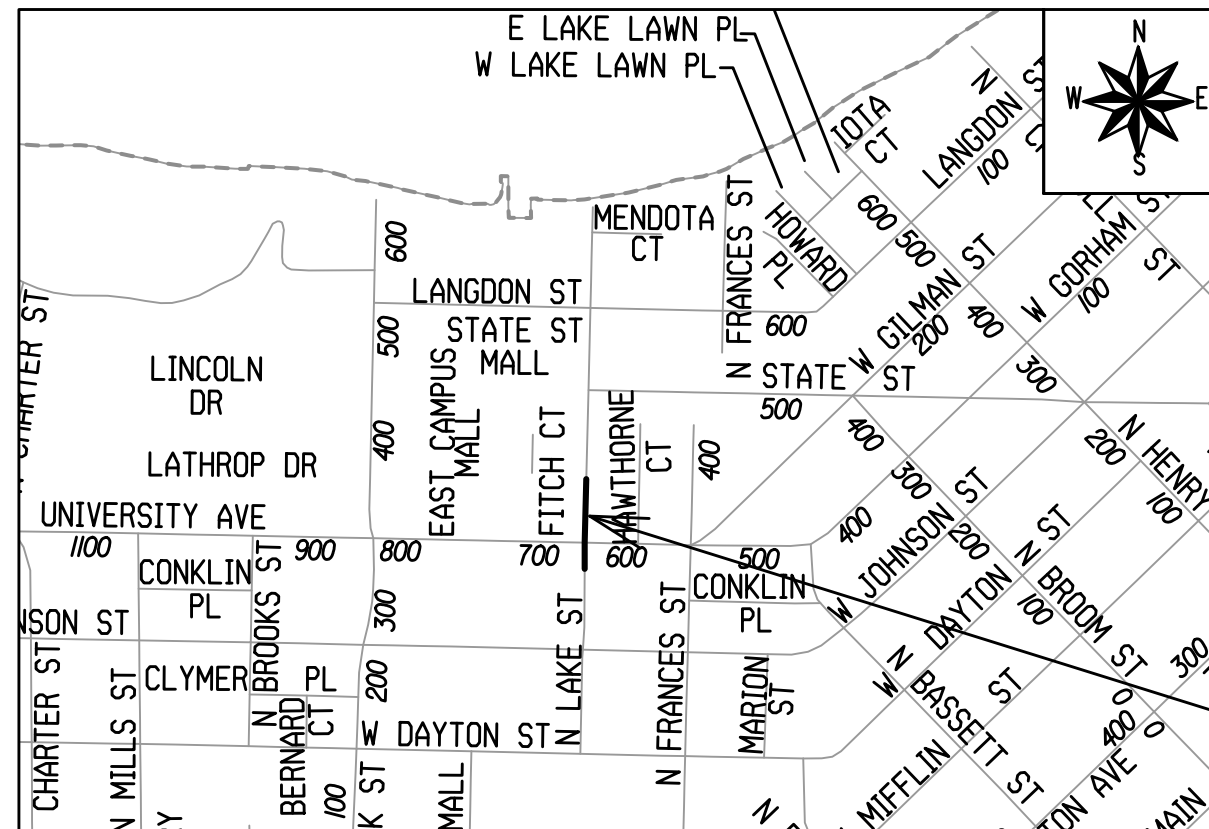
CITY ENGINEERING DIVISION

DEPARTMENT OF PUBLIC WORKS

PLAN OF PROPOSED IMPROVEMENT

LAKE STREET SANITARY SEWER REPLACEMENT

CITY PROJECT NO. 15045
CONTRACT NO. 9501



PROJECT
LOCATION

INDEX OF SHEETS

SHEET NO.	TITLE
1	
U1	SEWER PLAN & PROFILE
U2	SEWER SCHEDULE
PM1	PAVEMENT MARKING PLAN
TC1-TC6	TRAFFIC CONTROL PLAN

CONVENTIONAL SIGNS	
FIELD VERIFY ALL UTILITY LOCATIONS	
GAS	— G —
STORM SEWER	— ST —
SANITARY SEWER	— SAN —
WATER	— W —
BURIED ELECTRIC	— E —
OVERHEAD ELECTRIC	— OH —
POWER POLE	□
ADA COMPLIANT RAMP W/ DETECTABLE WARNING FIELD	▒
COMBUSTIBLE FLUIDS	☀

NOTES:
 ALL GUTTERS SHALL DRAIN WITH A MINIMUM GRADE OF 0.50% TOWARD STORM SEWER INLETS. SIDEWALK RAMPS AND CURB THRU SIDEWALK RAMPS SHALL HAVE A MAXIMUM SLOPE OF 1" PER 12", SIDEWALK AND CURB RAMPS SHALL BE CONSTRUCTED WITH A SIDE SLOPE OF 1.50%. SIDEWALK SHALL HAVE A MINIMUM LONGITUDINAL SLOPE OF 0.50% AND A MAXIMUM LONGITUDINAL SLOPE OF 5.00% EXCEPT WHERE STREET GRADES EXCEED 5.00%.

PUBLIC IMPROVEMENT PROJECT APPROVED

APPROVED DATE: FEBRUARY 13, 2024

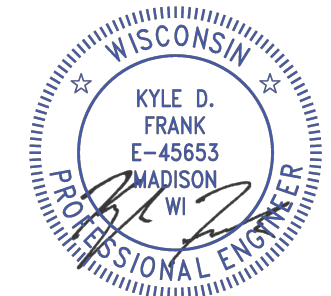
BY THE COMMON COUNCIL OF MADISON, WISCONSIN

PUBLIC IMPROVEMENT DESIGN APPROVED BY:

[Signature] Mar 22, 2024

City Engineer Date

SANITARY SEWER DESIGNED BY:



Mar 22, 2024

PAVEMENT MARKING & TRAFFIC CONTROL DESIGNED BY:



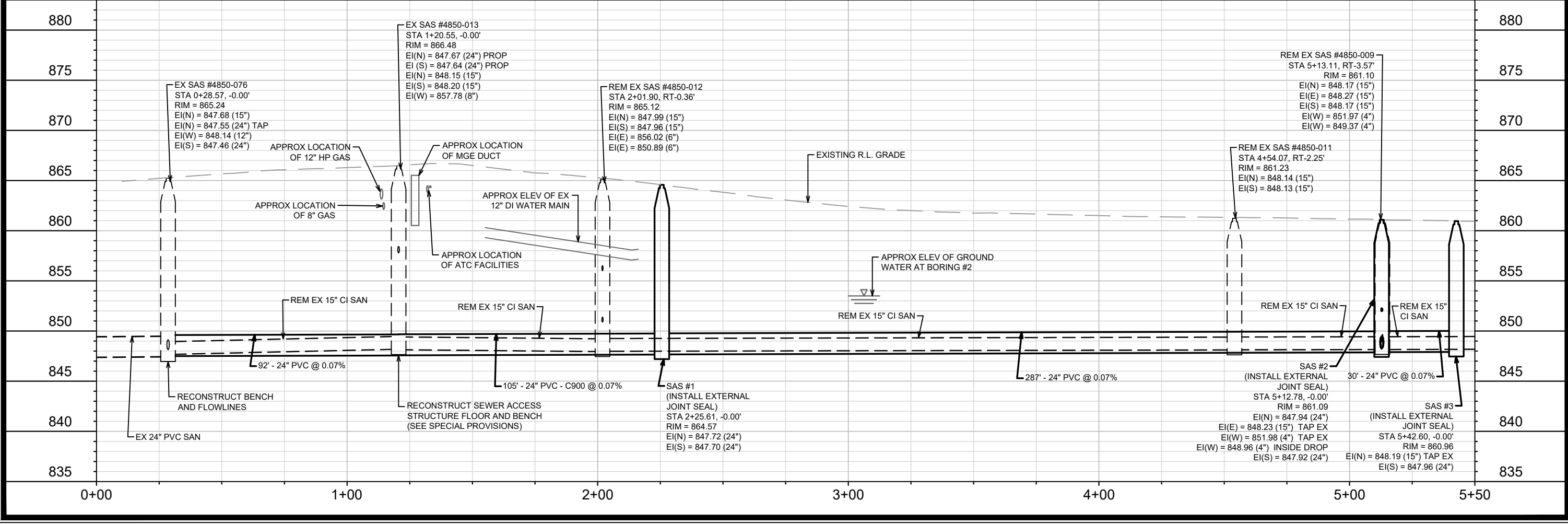
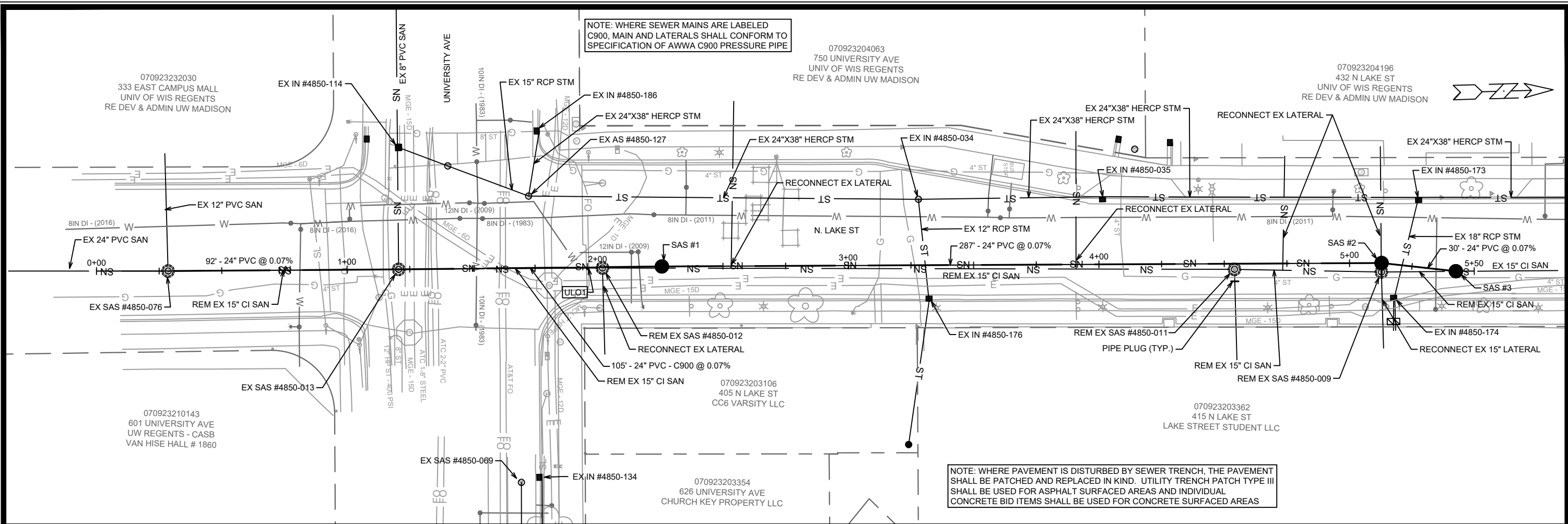
Mar 22, 2024

PLOT SCALE: 1" = 1'

PLOT NAME: ---

REV. DATE: 3/19/2024 6:08 PM

ORIGINATOR: CITY_OF_MADISON



15045
MADISON, WI
CONTRACT NO: #####

SEWER PLAN AND PROFILE
LAKE STREET SANITARY SEWER REPLACEMENT - 2024

U-1

070923203362
415 N LAKE ST
LAKE STREET STUDENT LLC

070923203354
626 UNIVERSITY AVE
CHURCH KEY PROPERTY LLC

070923203106
405 N LAKE ST
CC6 VARSITY LLC

070923210143
601 UNIVERSITY AVE
UW REGENTS - CASB
VAN HISE HALL # 1860

070923232030
333 EAST CAMPUS MALL
UNIV OF WIS REGENTS
RE DEV & ADMIN UW MADISON

070923204196
432 N LAKE ST
UNIV OF WIS REGENTS
RE DEV & ADMIN UW MADISON

070923204063
750 UNIVERSITY AVE
UNIV OF WIS REGENTS
RE DEV & ADMIN UW MADISON

DATE: 3/20/2024 1:26 PM
Scale: 1" = 40'
U-1

SANITARY SEWER SCHEDULE

PROPOSED SANITARY STRUCTURES

SAS NO.	STATION	LOCATION (OFFSET)	TOP OF CASTING	E.I.	DEPTH	NOTES
N. LAKE STREET						
SAS #1	2+25.61	CL	864.57	847.70	16.87	[1], 5-FT DIA
SAS #2	5+12.78	CL	861.09	847.92	13.17	[1], 5-FT DIA
SAS #3	5+42.60	CL	860.96	847.96	13.00	[1], 5-FT DIA

PROPOSED SANITARY PIPES

FROM (DNSTM)	TO (UPSTM)	DWNSTRM E.I.	UPSTRM E.I.	PLAN (PAY) LGTH (FT)	SLOPE (%)	PIPE SIZE	PVC TYPE	NOTES
E. WILSON STREET								
SAS #4850-076	SAS #4850-013	847.55	847.61	92	0.07%	24"	SDR-26	-
SAS #4850-013	SAS #1	847.63	847.70	105	0.07%	24"	C900	-
SAS #1	SAS #2	847.72	847.92	287	0.07%	24"	SDR-26	-
SAS #2	SAS #3	847.94	847.96	30	0.07%	24"	SDR-26	-

SANITARY STRUCTURE REMOVALS

STRUCTURE ID NO.	STATION	LOCATION (OFFSET)	TOP OF CASTING	E.I.	DEPTH	NOTES
N. LAKE STREET						
SAS #4850-012	2+01.90	RT-0.36	865.12	847.96	17.16	-
SAS #4850-011	4+54.46	RT-4.08	861.23	848.13	13.10	-
SAS #4850-009	5+12.96	CL	861.10	848.17	12.93	-

SANITARY PIPES REMOVALS & ABANDONMENTS

REMOVE FROM	REMOVE TO	LGTH (FT)	PAY LGTH (FT)	PIPE SIZE	PIPE TYPE	NOTES
N. LAKE STREET						
SAS #4850-076	SAS #4850-013	92	0	15"	CI	-
SAS #4850-013	SAS #4850-012	81	0	15"	CI	-
SAS #4850-012	SAS #4850-011	252	0	15"	CI	-
SAS #4850-011	SAS #4850-009	59	0	15"	CI	-
SAS #4850-009	SAS #3	25	0	15"	CI	-

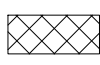
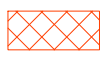

ULO

ULO NO.	STATION	LOCATION (OFFSET)	TYPE	TOP ELEV.	NOTES
N. LAKE STREET					
ULO1	1+96.42	CL	FIBER OPTIC	-	-

SPECIFIC NOTES

[1] INSTALL EXTERNAL SEWER ACCESS STRUCTURE JOINT SEAL PER S.D.D. 5.7.2

LEGEND:

-  SANITARY SEWER REPLACEMENT TRAFFIC CONTROL/WORK ZONE
-  LAKE ST RAMP TRAFFIC CONTROL
-  SANITARY SEWER TO BE REPLACED

ACCESS TO UNIVERSITY SQUARE PARKING GARAGE TO REMAIN OPEN AT ALL TIMES.

NB N LAKE ST (JOHNSON TO UNIVERSITY)

INSTALL TYPE III BARRICADES WITH "ROAD CLOSED LOCAL TRAFFIC ONLY" AND "PARKING GARAGES OPEN FROM LAKE ST" AT JOHNSON AND LAKE. STAGGER SO VEHICLES CAN STILL ACCESS PARKING GARAGES.

NB N LAKE ST (JOHNSON TO UNIVERSITY)

PLACE ADVANCED WARNING SIGN 7 DAYS PRIOR TO START DATE IN NB RIGHT TRAVEL LANE. MESSAGE TO READ:

NB LAKE ST TO CLOSE

(START DATE) TO (END DATE)

ACCESS TO LAKE & JOHNSON PARKING GARAGE TO REMAIN OPEN AT ALL TIMES.

PARKING GARAGES OPEN FROM LAKE ST

ROAD CLOSED LOCAL TRAFFIC ONLY

JOHNSON ST

FRANCES ST

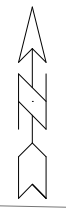
DAYTON ST



INSTALL ROAD CLOSED AHEAD SIGN.



ROAD WORK AHEAD



MATCHLINE - TC 2

MATCHLINE - TC 1

MARK	REVISION	DATE	BY

Designed By: _____ Date: 3/6/2024 10:25 AM Scale: _____

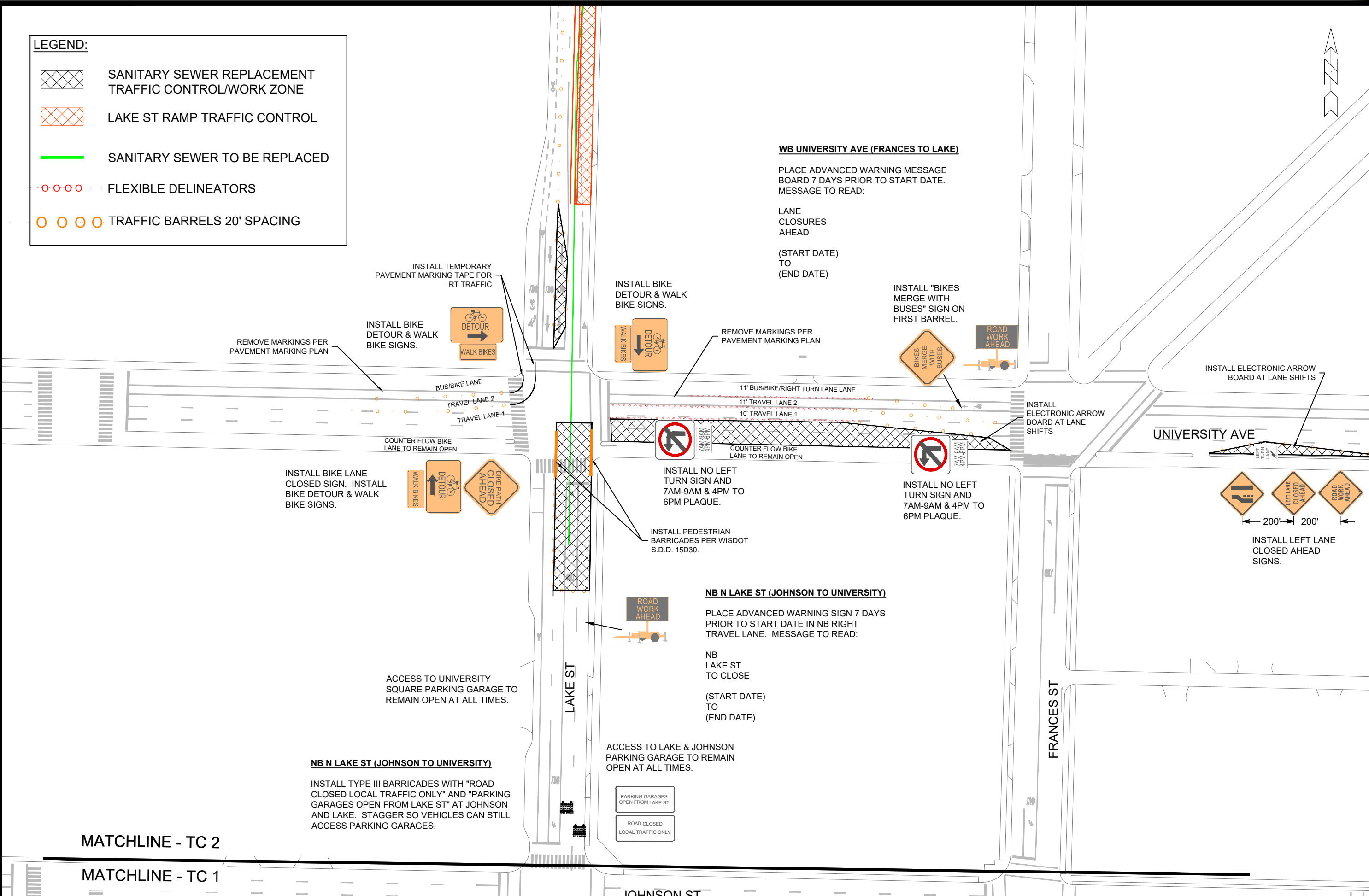
TRAFFIC CONTROL PLAN - PHASE 1
 LAKE ST & UNIVERSITY AVE - SANITARY SEWER REPLACEMENT
 MADISON, WI
 CONTRACT NO: _____



15045
 TC - 1

LEGEND:

- SANITARY SEWER REPLACEMENT TRAFFIC CONTROL/WORK ZONE
- LAKE ST RAMP TRAFFIC CONTROL
- SANITARY SEWER TO BE REPLACED
- FLEXIBLE DELINEATORS
- TRAFFIC BARRELS 20' SPACING



WB UNIVERSITY AVE (FRANCES TO LAKE)

PLACE ADVANCED WARNING MESSAGE BOARD 7 DAYS PRIOR TO START DATE. MESSAGE TO READ:

LANE CLOSURES AHEAD

(START DATE) TO (END DATE)

REMOVE MARKINGS PER PAVEMENT MARKING PLAN

INSTALL BIKE DETOUR & WALK BIKE SIGNS.

INSTALL "BIKES MERGE WITH BUSES" SIGN ON FIRST BARREL.

INSTALL ELECTRONIC ARROW BOARD AT LANE SHIFTS

INSTALL BIKE LANE CLOSED SIGN. INSTALL BIKE DETOUR & WALK BIKE SIGNS.

INSTALL NO LEFT TURN SIGN AND 7AM-9AM & 4PM TO 6PM PLAQUE.

INSTALL NO LEFT TURN SIGN AND 7AM-9AM & 4PM TO 6PM PLAQUE.

INSTALL PEDESTRIAN BARRICADES PER WISDOT S.D.D. 15D30.

INSTALL LEFT LANE CLOSED AHEAD SIGNS.

NB N LAKE ST (JOHNSON TO UNIVERSITY)

PLACE ADVANCED WARNING SIGN 7 DAYS PRIOR TO START DATE IN NB RIGHT TRAVEL LANE. MESSAGE TO READ:

NB LAKE ST TO CLOSE

(START DATE) TO (END DATE)

ACCESS TO LAKE & JOHNSON PARKING GARAGE TO REMAIN OPEN AT ALL TIMES.

NB N LAKE ST (JOHNSON TO UNIVERSITY)

INSTALL TYPE III BARRICADES WITH "ROAD CLOSED LOCAL TRAFFIC ONLY" AND "PARKING GARAGES OPEN FROM LAKE ST" AT JOHNSON AND LAKE. STAGGER SO VEHICLES CAN STILL ACCESS PARKING GARAGES.

PARKING GARAGES OPEN FROM LAKE ST

ROAD CLOSED LOCAL TRAFFIC ONLY

MATCHLINE - TC 2

MATCHLINE - TC 1

MARK	REVISION	DATE	BY

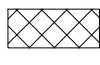
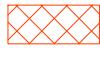

Designed By: [] Date: 3/6/2024 10:20 AM Scale: []

TRAFFIC CONTROL PLAN - PHASE 1
 LAKE ST & UNIVERSITY AVE - SANITARY SEWER REPLACEMENT
 MADISON, WI
 CONTRACT NO: []

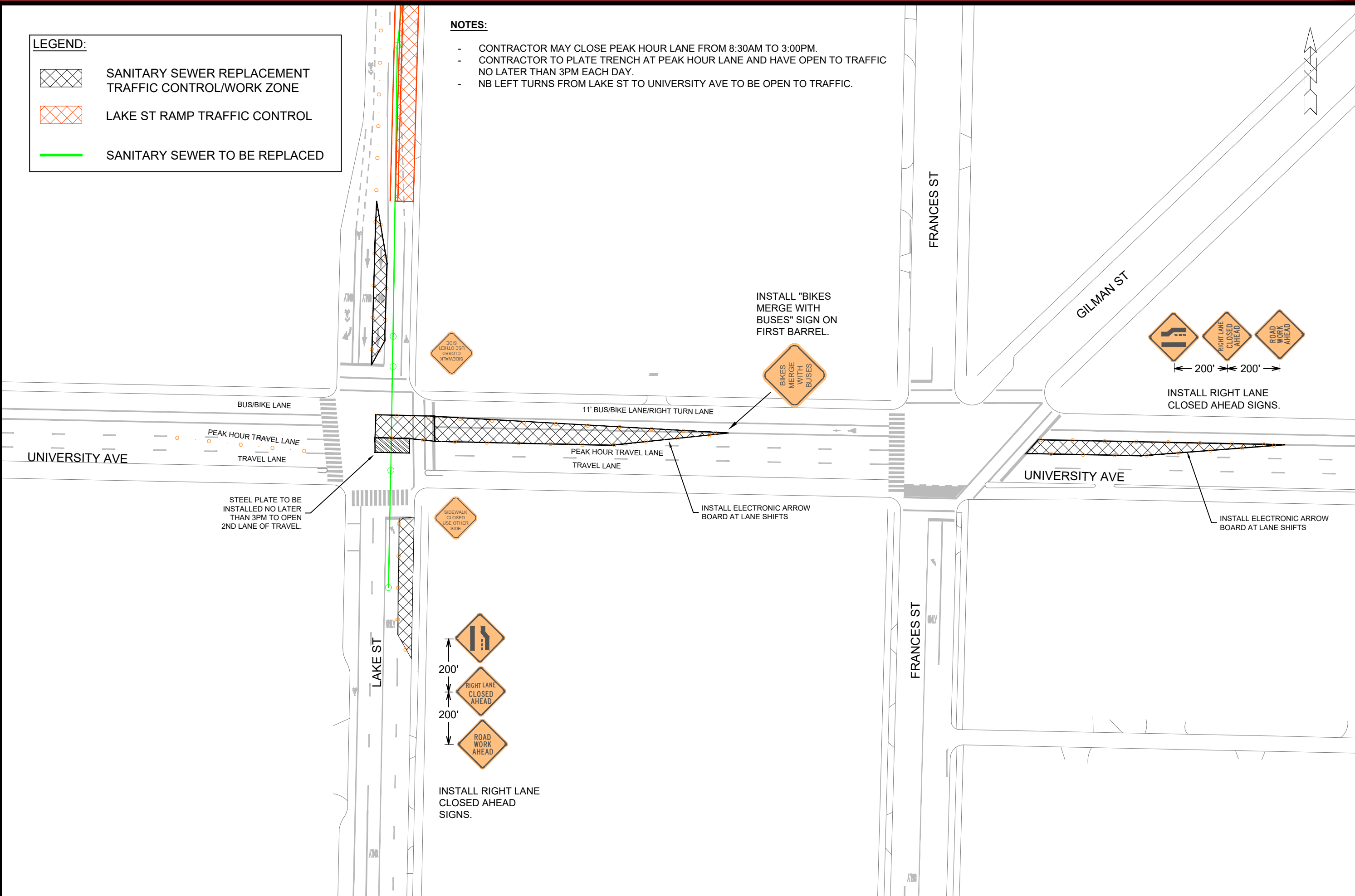


15045
 TC - 2

LEGEND:

-  SANITARY SEWER REPLACEMENT TRAFFIC CONTROL/WORK ZONE
-  LAKE ST RAMP TRAFFIC CONTROL
-  SANITARY SEWER TO BE REPLACED

- NOTES:**
- CONTRACTOR MAY CLOSE PEAK HOUR LANE FROM 8:30AM TO 3:00PM.
 - CONTRACTOR TO PLATE TRENCH AT PEAK HOUR LANE AND HAVE OPEN TO TRAFFIC NO LATER THAN 3PM EACH DAY.
 - NB LEFT TURNS FROM LAKE ST TO UNIVERSITY AVE TO BE OPEN TO TRAFFIC.



MARK	REVISION	DATE	BY

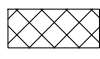
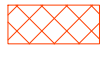


Designed By: _____ Date: 3/6/2024 11:23 AM
 Scale: _____

TRAFFIC CONTROL PLAN - PHASE 2 PEAK HOUR - WEEKDAYS
 LAKE ST & UNIVERSITY AVE - SANITARY SEWER REPLACEMENT
 MADISON, WI
 CONTRACT NO: _____

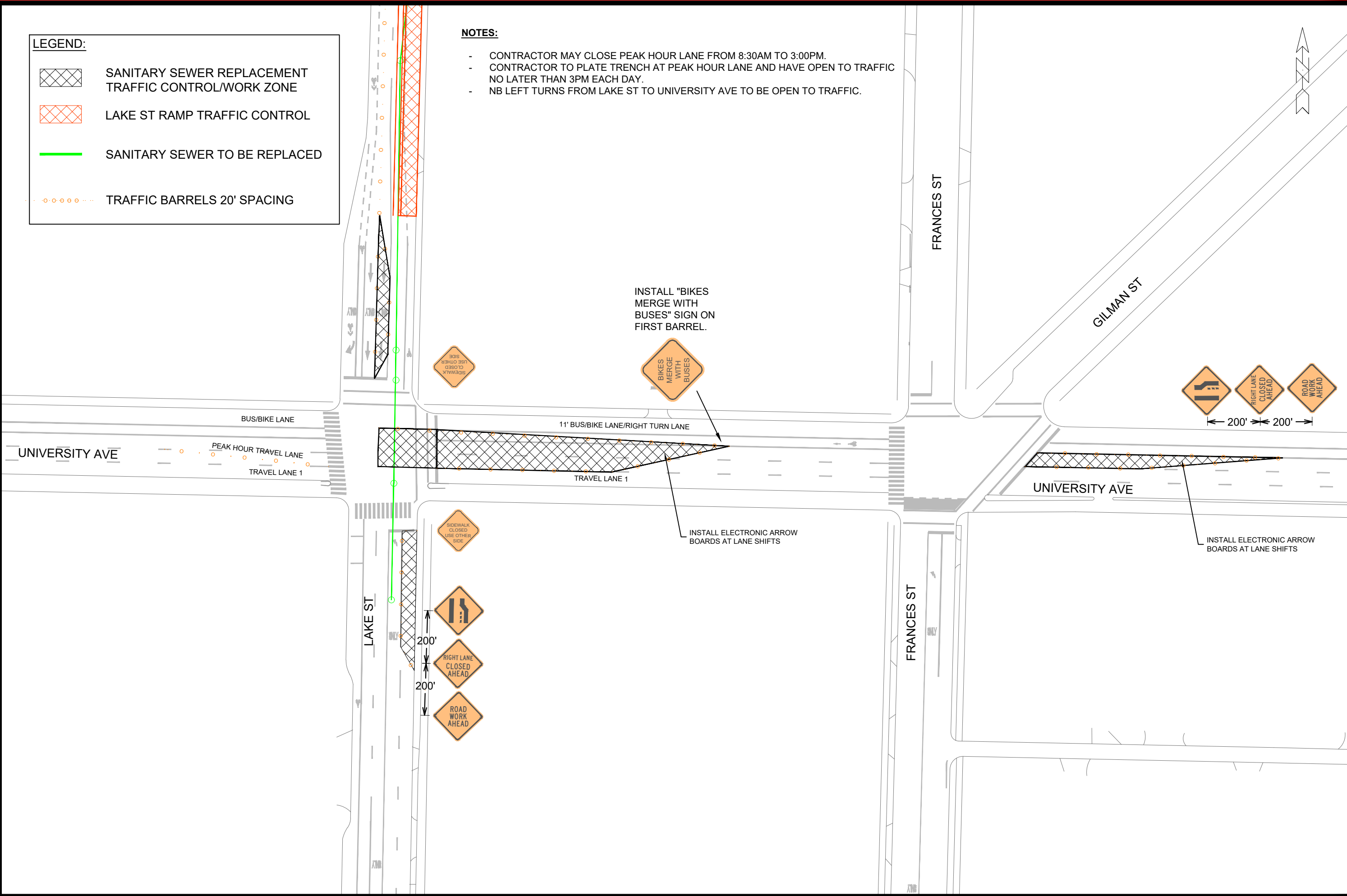


15045
 TC - 3

LEGEND:

-  SANITARY SEWER REPLACEMENT TRAFFIC CONTROL/WORK ZONE
-  LAKE ST RAMP TRAFFIC CONTROL
-  SANITARY SEWER TO BE REPLACED
-  TRAFFIC BARRELS 20' SPACING

- NOTES:**
- CONTRACTOR MAY CLOSE PEAK HOUR LANE FROM 8:30AM TO 3:00PM.
 - CONTRACTOR TO PLATE TRENCH AT PEAK HOUR LANE AND HAVE OPEN TO TRAFFIC NO LATER THAN 3PM EACH DAY.
 - NB LEFT TURNS FROM LAKE ST TO UNIVERSITY AVE TO BE OPEN TO TRAFFIC.



REVISION	DATE	BY

MARKED BY: _____ DATE: 3/6/2024 11:29 AM
 SCALE: _____

TRAFFIC CONTROL PLAN - PHASE 2 OFF PEAK - WEEKDAYS
 LAKE ST & UNIVERSITY AVE - SANITARY SEWER REPLACEMENT
 MADISON, WI
 CONTRACT NO: _____

M:\DESIGN\Projects\15045\CAD\Traffic\15045TE-TrafficControl Phase 2 - Off Peak.dwg



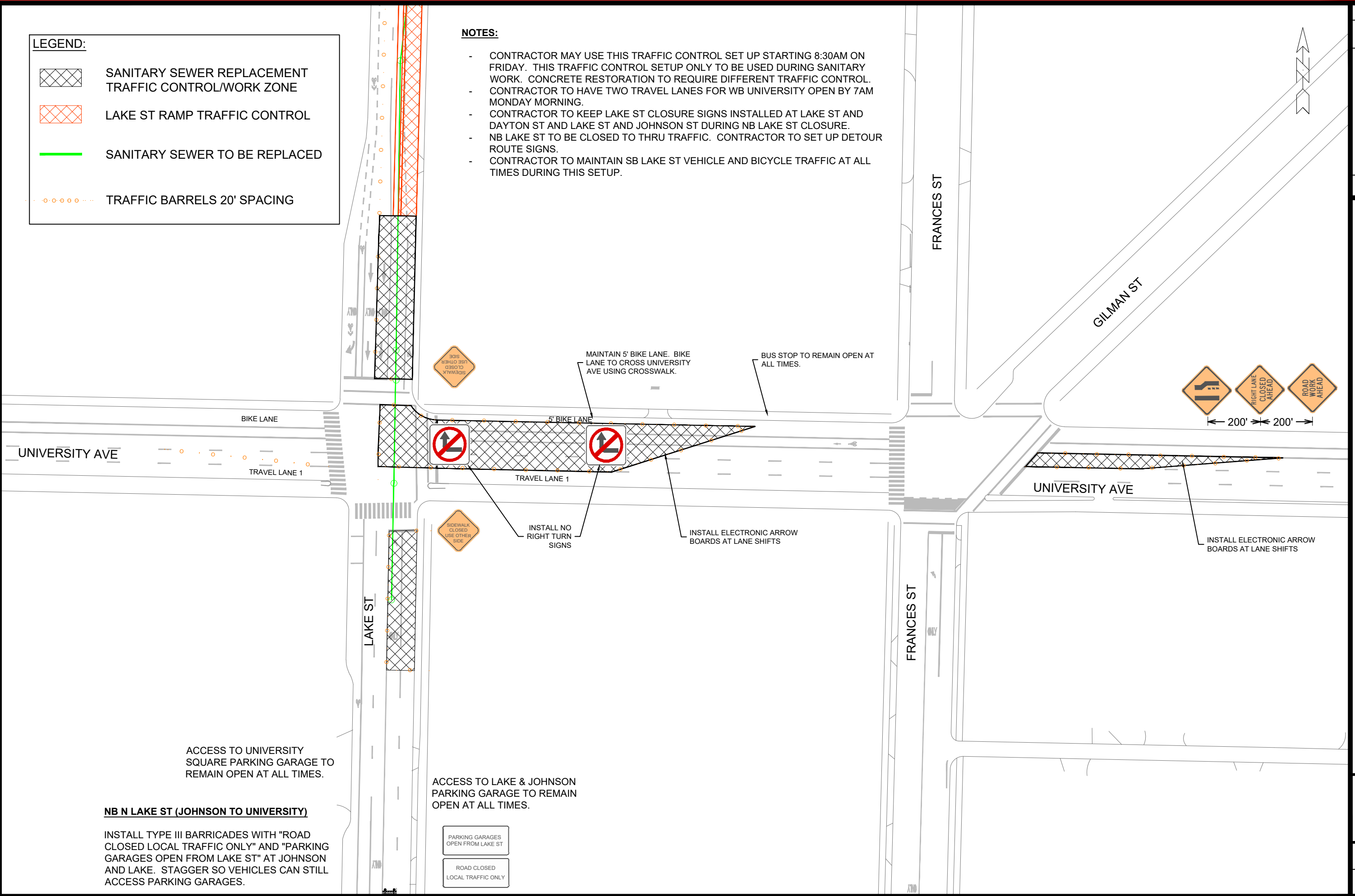
15045
 TC - 4

LEGEND:

-  SANITARY SEWER REPLACEMENT TRAFFIC CONTROL/WORK ZONE
-  LAKE ST RAMP TRAFFIC CONTROL
-  SANITARY SEWER TO BE REPLACED
-  TRAFFIC BARRELS 20' SPACING

NOTES:

- CONTRACTOR MAY USE THIS TRAFFIC CONTROL SET UP STARTING 8:30AM ON FRIDAY. THIS TRAFFIC CONTROL SETUP ONLY TO BE USED DURING SANITARY WORK. CONCRETE RESTORATION TO REQUIRE DIFFERENT TRAFFIC CONTROL.
- CONTRACTOR TO HAVE TWO TRAVEL LANES FOR WB UNIVERSITY OPEN BY 7AM MONDAY MORNING.
- CONTRACTOR TO KEEP LAKE ST CLOSURE SIGNS INSTALLED AT LAKE ST AND DAYTON ST AND LAKE ST AND JOHNSON ST DURING NB LAKE ST CLOSURE.
- NB LAKE ST TO BE CLOSED TO THRU TRAFFIC. CONTRACTOR TO SET UP DETOUR ROUTE SIGNS.
- CONTRACTOR TO MAINTAIN SB LAKE ST VEHICLE AND BICYCLE TRAFFIC AT ALL TIMES DURING THIS SETUP.



ACCESS TO UNIVERSITY SQUARE PARKING GARAGE TO REMAIN OPEN AT ALL TIMES.

NB N LAKE ST (JOHNSON TO UNIVERSITY)

INSTALL TYPE III BARRICADES WITH "ROAD CLOSED LOCAL TRAFFIC ONLY" AND "PARKING GARAGES OPEN FROM LAKE ST" AT JOHNSON AND LAKE. STAGGER SO VEHICLES CAN STILL ACCESS PARKING GARAGES.

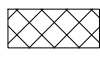
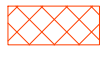

ACCESS TO LAKE & JOHNSON PARKING GARAGE TO REMAIN OPEN AT ALL TIMES.

PARKING GARAGES OPEN FROM LAKE ST

ROAD CLOSED LOCAL TRAFFIC ONLY

<p>TRAFFIC CONTROL PLAN - PHASE 2 - WEEKEND</p> <p>LAKE ST & UNIVERSITY AVE - SANITARY SEWER REPLACEMENT</p> <p>MADISON, WI</p>	<p>CONTRACT NO:</p> <p>15045</p> <p>TC - 5</p>
<p>M:\DESIGN\Projects\15045\CAD\Traffic\15045TE-TrafficControl Phase 2 - Off Peak Sanitary Work.dwg</p>	<p>Scale: ---</p> <p>DATE: ---</p> <p>BY: ---</p> <p>REVISION: ---</p> <p>Date: 3/22/2024 11:40 AM</p>

LEGEND:

-  SANITARY SEWER REPLACEMENT TRAFFIC CONTROL/WORK ZONE
-  LAKE ST RAMP TRAFFIC CONTROL
-  SANITARY SEWER TO BE REPLACED

REMOVE SB TRAFFIC ON LAKE ST STARTING AT LANGDON ST. MAINTAIN 5' SB BIKE LANE.

CITY TRAFFIC ENGINEERING TO COORDINATE TRAFFIC CONTROL FRONTING STATE ST GARAGE PROJECT WITH GARAGE CONTRACTOR.

INSTALL "BIKES MERGE WITH BUSES" SIGN ON BARREL.

INSTALL ELECTRONIC FLASHING ARROW BOARD AT LANE SHIFTS

INSTALL 4" YELLOW SKIPS (2' LINE WITH 6" GAP) TEMPORARY PAVEMENT MARKING TAPE

INSTALL 4" SKIPS (2' LINE WITH 6" GAP) TEMPORARY PAVEMENT MARKING TAPE

SHIFT NB LAKE ST TRAFFIC. NB LAKE ST WILL BE THRU AND LEFT TURN COMBINED LANE.

INSTALL ELECTRONIC FLASHING ARROW BOARD AT LANE SHIFTS

UNIVERSITY AVE

UNIVERSITY AVE

LAKE ST

FRANCES ST



MARK	REVISION	DATE	BY

TRAFFIC CONTROL PLAN - PHASE 3
 LAKE ST & UNIVERSITY AVE - SANITARY SEWER REPLACEMENT
 MADISON, WI
 CONTRACT NO: 15045



15045
 TC - 6

M:\DESIGN\Projects\15045\CAD\Traffic\15045TE-TrafficControl Phase 3.dwg

Designed By: ...
 Date: 3/22/2024 11:49 AM
 Scale: ...